



ANNUAL REPORT ***2022-2023***

 GLOBALLY
RECONNECT

CONTENTS

STRONGER TOGETHER.....	3	EMPOWERED DIGNITY.....	13
MESSAGE FROM FOUNDER.....	4	SUSTAINING OWNERSHIP.....	14
MESSAGE FROM CO-CREATOR.....	5	ACHIEVING SUSTAINABILITY.....	15
ABOUT US.....	6	FINANCIAL EMPOWERMENT.....	16
VALUES INSPIRED.....	7	HOLISTIC IMPACT.....	17
WHERE WE WORK.....	8	STRATEGIC PARTNERSHIPS.....	18
ORIGIN STORY.....	9	LOCAL PARTNERS.....	19
COMMUNITY CO-CREATORS.....	10	YOUTH CO-CREATORS.....	20
THE USTAWI SURVEY.....	11	LOOKING AHEAD.....	21
DATA STORY.....	12	LOGIC FRAMEWORK.....	22



STRONGER TOGETHER

Co-creating sustainable living with communities.

Globally Reconnect Ltd presents our first report. This covers our work and impact from April 2021 to April 2023.

This year has seen communities in the arid and semi-arid regions experiencing the worst drought in 40 years after depressed rainfall for five consecutive rain seasons. Despite this, we celebrate the efforts made to ensure that communities will overcome this and future droughts, through the aspiration to eliminate poverty in Kenya community by community.

With our Poverty Stoplight survey, a tool developed by Fundación Paraguaya to eliminate poverty, we were able to interact with 488 family members of a small rural community named Mashuru in Kajiado County, Kenya.

We have developed a strong and close relationship with the people of Mashuru. This has formed the basis for the next phase of our projects and experiments in the community with the aspiration of doing things differently: Involving and engaging members of the Mashuru community in every stage of community development. Together, we will eliminate poverty.



***We are Being Held.
We are Stronger Together.
Let us Gracefully Expand.***

**Your Co-Creator,
Kavita Tanna**

MESSAGE FROM FOUNDER

As I sit down to write this message, I am taken back to the moment that I pressed GO on the creation of Globally Reconnect Ltd, a company formed with the vision of becoming a collaborative, community-based, socially responsible organisation.

The date of incorporation is significant because it is the date of my parents' wedding anniversary. They are our model co-creators. Each brings their unique gifts to the relationship that started as an arrangement between elders and now flourishes through the love, connection and belief of all generations.

We believe that by holding the shared values of love, relationship and service to all, our parents have led our family to a sense of collective flourishing.

Inviting Samson Nyongesa Nyikuri to become the first official Co-Creator in July 2022 feels like the beginning of creating an extended family. He is a gift to the world with his passion, kindness and quiet strength as he gently cultivates powerful relationships, lifts us up and commits to fulfilling our vision.

As we aspire to achieve our audacious aspiration of Empowered Dignity for all, beginning with the Maa community in Mashuru, Kenya, we are grateful for the love, support and guidance of Nick Salmon, Thompson Morrison and Derek Peterson. Our Living Ubuntu PHamily, Babusi, Jimmie, Rose, Anita, Beatrice, Lizzah, Petra, Rodgers, Derrick keeps expanding. We are because you are.

Reflecting on the journey of Globally Reconnect Ltd there are mixed feelings. The last two years represent a rollercoaster of emotions, activities and learning. We have experienced the highs of joyful connection and the lows of losing loved ones. We honour the contribution of the living and those who continue to bless us.

The greatest sources of joy are shared with you in this Annual Report. This is our co-created attempt to share the colourful story of our efforts to co-create a harmonious world in which all living systems flourish. We hope you are inspired to join us.



Samson Nyikuri Nyongesa
Co-creator

MESSAGE FROM CO-CREATOR

As a Co-creator of Globally Reconnect, I have been privileged to work towards sustainable solutions for individuals and communities to live a life with dignity. This is more than just a job; it is my life's calling.

I firmly believe that every individual is unique and that our differences make us special. It is with these differences that we have the opportunity to support each other and help everyone reach their full potential in life.

Globally Reconnect has provided me with an honourable opportunity to be of service to communities around the world. Being part of a team that evaluates, together with the community, the challenges of the community and working together with them to be part of the solution has been the most humbling and powerful experience. More than ever, we are committed to amplifying the voices of the people in this community and welcoming more Co-creators to this community.

Other than achieving UN SDG 1, 4, and 6 in the community, I look forward to sharing personal stories of success from individuals, recognising that

this will take significant efforts and time, but with the commitment from GR, the community, and our partners, the vision for the community is within grasp.

I want to extend my appreciation to Globally Reconnect's founder, Kavita Tanna, for her hard work, commitment to the cause, and different view and vision for the world.

I hope you find joy and inspiration to join in our efforts to co-create a harmonious world where all living systems can flourish.

ABOUT US

Globally Reconnect is a limited company founded in the UK with the aspiration to recognise that every individual has inherent values and strengths, with the responsibility to share them with the world.

The guiding inspiration for our Founding Director, Kavita Tanna is the quote by Mahatma Gandhi, “Be the change you wish to see in the world.” She is now realising that what we need is to, “Be who we want to see in the world.” We encourage all of us to live into our natural gifts and talents and make a positive contribution to our world.

Globally Reconnect is inspired to join the efforts of solving the most immediate needs of the world as described by The United Nations Sustainable Development Goals. We believe that every individual, organisation and community has a role to play in achieving this for the world.

Our approach is to develop deep and meaningful relationships with community members, local organisations and international organisations. It is important to us to first understand each community in order to decide with them the immediate and much needed developments that we can collaborate towards achieving.

We build on the assets that already exist within a community setting to develop the strategies needed to address the challenges within a community. The people’s lived experiences and indigenous wisdom are extended through global connections who are aligned with our vision to see all living systems flourish.

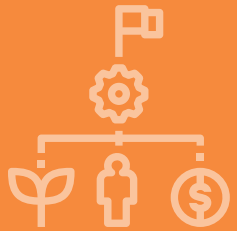


Be the change you wish to see in the world.

-Mahatma Gandhi



VALUES INSPIRED



CORE VALUES

- Trust
- Freedom
- Integrity



VISION

Co-creating a harmonious world in which all living systems can flourish.



MISSION

Our mission is to co-create mutually trusting relationships that empower us to meaningfully reconnect with ourselves, all living things and the global system.



ASPIRATIONS

- Share stories of hope and resilience.
- Access to clean water.
- Access to quality education.





WHERE WE WORK

Globally Reconnect was invited to Mashuru by one of the daughters of the community to help support the people to overcome their specific challenges. The Mashuru community is located in the South of Kenya in the Eastern part of Kajiado County.

According to the 2019 census, Mashuru covers an area of 2,250 square kilometres and has a total population of 63,861 with 16,152 households with an average of 4 people per household. Here is a [link](#) to the ward that Mashuru belongs to.

We have based our work in four areas in the Mashuru region: Oltepesi, Ormanie, Olpeliei and Emboloi. These areas have a population of 756 people living in 150 households with the average of 5 people per household.



NEEMA NOSIM

*Daughter of the Mashuru
community Alumni of
Egerton University*

ORIGIN STORY

I always invite people to my community because I believe people in my community have the potential to lead better lives than what I experienced while growing up. I maintain the relationship with Globally Reconnect because they have a good vision and strategy for collaborating and working with my community.

I invited the President's Award, Egerton Chapter, to my community to build a school for children because the village had no school for the children. The lack of a school forced them to stay home until they were old enough to walk to the nearest school in the next village, 10km away.

After constructing the school, a team led by Jimmie Chengo, with support from Nick Salmon and Kavita Tanna initiated the Ustawi Survey in my community.

The team from Globally Reconnect has given hope for the people in my community by supporting us to learn about the specific needs that we face and, together with the team, we come up with ideas on how we can achieve our goals.

Globally Reconnect (GR) is also encouraging interactions between the members of my community; for us to discuss the different ideas we have and how we can support each other to grow. The survey report illuminated that culture and collaboration is the strength of our people, and we hope to use this to help each other grow. My community's priorities were latrines as many households were sharing but, as a result of the awareness spread by GR, all households in my community have constructed latrines and this has improved the health and hygiene especially of children in my community.

Access to water was selected as the most immediate need, and there are active efforts from Globally Reconnect and my community to address this community challenge.

GR aims to work with the community to implement much-needed sustainable projects that will have a long-lasting impact.

COMMUNITY CO-CREATORS



Mrs Elizabeth Kishapui, a teacher at Guadalupe Primary School in Oltepesi, Mashuru has most actively supported the efforts made by Globally Reconnect. Our interactions in the community are made easier because of the strength of her relationship with all people in the community and how she supports the growth of different households in the community.



We are grateful to the commitment of the Assistant Chief of Mashuru sub-location, **Mr Isaiiah Lalaito** for understanding the purpose, mission and vision of Globally Reconnect and his continuous encouragement to us and the people of Mashuru to do more. Mr Lalaito is passionate about the growth of his community and is always ready to participate in the projects and experiments to support people from his community.

THE USTAWI SURVEY

“Ustawi” means “to flourish” and is the main aspiration that Globally Reconnect has for the Mashuru community.

The Ustawi Survey is a locally-adapted version of the Poverty Stoplight, a tool developed by Fundación Paraguaya. The Stoplight is a tool that seeks to activate the potential of families and communities to lift themselves out of poverty. Using a technology platform, it offers a self-assessment survey and intervention model that enables people to develop practical solutions to overcome their specific needs.

This organisation aspires to eliminate the experience of poverty in the world, which is aligned to the United Nations Sustainable Development Goal #1: No Poverty.

Our interactions with the community have three key intentions:

- Empower Dignity
- Sustain Ownership
- Strategic Relationships



The Ustawi Survey was conducted by Jimmie Chengo, Anita Jerotich, Rose Poka, Samson Nyikuri, and Rodgers Odour between 11-16 October 2021.

The households responded to 38 indicators under the six multidimensional poverty dimensions:

- Income & Employment
- Health & Environment
- Housing & Infrastructure
- Education & Culture
- Organisation & Participation
- Interiority & Motivation

During our survey facilitation, we interacted with 488 men, women, and children of the different households in the Embolioi, Olmanie, Olpeliei, and Oltepesi areas of the Mashuru community.

After the survey, the Ustawi team supported the households to develop a Life Map; a tool used to identify the strengths and priorities of the household. It forms the basis of a co-created strategy to make improvements in the areas of challenge. Each household's specific achievements and priorities are collated as data points to support the community's collective potential to flourish.

DATA STORY

Gathering data is just the beginning. Collating the data reveals the story of the community. The story leads us to what needs to be done.

The Ustawi team travelled over much land to meet the people of Mashuru. Their efforts were rewarded with welcoming smiles and curiosity about our intention. Once the intention was explained, the team were successful in creating strong relationships with the community.

Beyond gathering socio-demographic data, the team were able to learn through the stories shared by the people about their lives. Using the technology provided by Globally Reconnect, they completed survey after survey in order to understand the strengths and challenges faced by people in Mashuru.

The questions and responses have visual representations and simple text descriptions. Each response is colour-coded:

- extreme poverty (red)
- poverty (yellow)
- strength (green)

The resulting Life Map and associated action plans represent the household's priorities when it comes to improving their lives and mitigating the indicators of poverty.

When analysing the resulting data, it became clear that the dimension of Health and Environment held the greatest number of yellow indicators. Although some indicators, such as garbage

disposal, had greater red and yellow results, the community identified that their main priority overall was access to clean water and sanitation and hygiene practices. Globally Reconnect came to understand that when there is access to water, many of the other areas of need would diminish.

Access to water means less use of disposable materials, increased income as the cattle are healthy and an overall sense of improved wellbeing. The next priority will be closer access to healthcare, with quality education closely following. With Globally Reconnect, the community has prioritised:

- No Poverty
- Clean Water
- Quality Education



EMPOWERED DIGNITY

We believe in collaborating with the people of Mashuru to understand the specific needs of households and collective community needs and then working together to develop strategies that can overcome these challenges.

Empowered Dignity represents the intention to co-create the conditions for illuminating the natural gifts and talents of every human being and recognizing their inherent value and worth. Globally Reconnect believes that we all have a gift to offer and a responsibility to share it with the world. The vision is that every human being can see a way to co-create a harmonious world where all of us can flourish.

In Mashuru, we are working with the community towards Empowered Dignity for all by facilitating the Ustawi Survey, a Poverty Stoplight tool adapted to fit the community of Mashuru. Through this survey, the Globally Reconnect Facilitators work closely with the different households to name their existing strengths, current priorities, and future needs.

Each household co-creates a Life Plan with the help of a Globally Reconnect Facilitator. During this process, the household identifies its strengths and challenges and clearly defines their poverty level or non-poverty levels. The facilitators then guide them to develop a strategy that will support these families in dealing with their specific deprivations to improve their poverty indicators and help them to move out of poverty.



SUSTAINING OWNERSHIP

We aim to co-create sustainable solutions that draw on the knowledge gained from lived experiences, indigenous wisdom, and modern science while ensuring that everyone is included in the process of taking action to improve their own lives and of those around them. To ensure the integrity and sustainability of these efforts, we conduct regular community meetings, consultations, and feedback sessions, which help to build trust and capacity among the community members.

By involving them from the planning to implementation to maintenance stages, we aim to empower them to own, maintain and sustain the initiatives for their current priorities and future needs.

The community has total freedom in this relationship, which has led to a sense of ownership and investment in the success of our partnership.

PARTNER IN THIS WORK: HYDRATING HUMANITY

Hydrating Humanity has supported other communities in the country's Western part by constructing over 1000 boreholes for different communities. Globally Reconnect will collaborate with Hydrating Humanity to provide water management and conservation practices to the community. This is in line with building capacity in the people of Mashuru so that they can Sustain Ownership of water projects and initiatives.



ACHIEVING SUSTAINABILITY

We align our goals with the United Nations Sustainable Development Goals to ensure that we are contributing to broader global objectives. For the community of Mashuru, following the initial Ustawi Survey and follow-up conversations with the community members, we are currently focused on three specific UNSDGs that will have maximum impacts on the community:



SDG 1: NO POVERTY

- Conduct the Ustawi Stoplight Survey each year so that the community remains informed of the ever changing dynamics of flourishing and challenges.
- Collaborate with organisations with the same goal to connect specific resources to the community that will support them to flourish.
- Encourage the community to form groups to support and learn from each other.



SDG 6: ACCESS TO WATER

- Improve the access of water in the community through drilling boreholes near all educational centres in Mashuru.
- Provide training for water conservation and sanitation/ hygiene to the community.
- Build capacity in the members of the community to be able to sustain the water projects and initiatives.



SDG 4: QUALITY EDUCATION

- Educational transformation: Promote access to education and implement interventions to address key barriers that limit students' ability to progress.
- Enhance the quality of education: Support school leaders to improve the quality of education by providing training and promoting evidence-based teaching practices.
- Foster self-sufficiency of schools: Provide support and training in income-generating activities, community engagement, and resource management.



DUNCAN MOPEL

Son of the Mashuru Community

Livestock Farmer

Boda Boda Driver

FINANCIAL EMPOWERMENT

Meet Duncan Mopel, whose life has been impacted after the Ustawi Survey was conducted in the community. When setting priorities for his family, Duncan was interested in the importance of effective household planning, savings, and budgeting.

With this knowledge, Duncan's family now has a monthly budget that enables them to plan for their household activities more efficiently. This financial planning has been crucial for them, especially during difficult times such as the prolonged drought they recently experienced.

However, with the rainfall returning to the community, Duncan has already added 10 goats and sheep to his herd. He plans to engage in frequent business activity with his cattle to increase the income of his family and to evade the devastating effects of frequent droughts in the community.

During the survey, the health indicator was also a priority for him and his family. Duncan has made progress and registered for and acquired the National Hospital Insurance Fund cover for his family.



HOLISTIC IMPACT

EZEKIEL UKAH

Meet Ezekiel Uka, a hardworking farmer from Mashuru who has made significant strides in improving his livelihood. His success story has caught the attention of the Globally Reconnect team, who have been impressed with his sourcefulness and determination.

One of Ezekiel's most impressive accomplishments is the drilling of his own borehole, which has allowed him to irrigate his crops and generate a sustainable income for his family. Thanks to his efforts, all of his children have been able to receive an education, with one currently studying to become a medical practitioner.

Ezekiel credits Globally Reconnect with teaching him the importance of taking small steps towards achieving his goals through the Ustawi Survey interaction. As a result, he is now working towards constructing a safer and more reliable home for his family. He has already gathered the necessary materials for the construction and is on track to complete the project within the next eight months.

EZEKIEL UKAH

*Inspiration to the Mashuru
Community
Crop Farmer*



STRATEGIC PARTNERSHIPS

Strategic Partnerships are key to achieving the goals of Globally Reconnect.

We value input from:

- individuals and grassroots organisations
- government agencies, and
- established local and international organisations.

We believe all of us have a role to play in ensuring we are co-creating a harmonious world where we can all flourish.

KENYA: AFRIBUK SOCIETY

Founded by Jimmie Chengo, Afribuk was born out of the desire to showcase solutions to the challenges faced by communities like Mashuru, specifically focusing on amplifying stories of resilience; children who want to thrive and be defined by more than their precarity.

Jimmie spearheaded the work that Globally Reconnect is undertaking in Mashuru by identifying the need for more support for the community to flourish. He identified the potential in the people of Mashuru, their strength and their hope for a greater future.

USA: COLLABORATIVE LEARNING NETWORK (CLN)

CLN has worked with Afribuk and Globally Reconnect, sharing a vision of empowering the community and the local schools to

improve the well-being and their quality of life. CLN is involved in strategic planning, decision-making, resource acquisition, and allocation in Mashuru, making the organisation a close associate of Globally Reconnect.

GLOBAL: ENGINEERS WITHOUT BORDERS (EWB)

EWB and Globally Reconnect (GR) had the opportunity to exchange knowledge and experiences when the Montana State University team travelled to Kenya to inspect their projects.

GR shared their knowledge and experience regarding community mobilisation, while the Montana team discussed the positive outcomes of their efforts in the community, which included improving access to water for a school and households

Both GR and EWB focus on capacity building; a crucial step towards maintaining and sustaining initiatives for long-term community benefits.



LOCAL PARTNERS

NEW LIFE MISSION

New Life Mission (NLM) is a Christian humanitarian and non-governmental organisation operating since 1978 with a mission to address humanitarian welfare issues. NLM has been instrumental in supporting various communities in Kenya, including the people of Mashuru. They have established a school to provide education and a hospital to improve access to healthcare. They have also dug 37 shallow wells and 5 boreholes to enhance access to clean water across the region of Mashuru.

Globally Reconnect (GR) has been in discussions with New Life Mission about the support needed for the Mashuru community. During these talks, GR and NLM agreed that improving access to water and empowering the community to sustain initiatives were essential.

They also acknowledged that the Mashuru community members needed support to identify their needs and overcome the identified challenges. The goal of this collaboration would be to develop sustainable solutions that can improve the well-being of the Mashuru community for years to come.

COMPASSION INTERNATIONAL

Globally Reconnect would like to acknowledge the efforts of the staff of Compassion International, a local organisation in Mashuru that has been supporting our efforts in the community.

We have held many conversations with the community members from the Compassion International spaces, and they have supported these conversations by attending and contributing to the ideas of the communities. We have worked with the staff of Compassion International to provide nutritious meals to the people attending our meetings.

As we look to advance the education of the children of Mashuru later this year, we look forward to collaborating with Compassion International, which supports over 400 children from the community.

MAJIK WATER

Majik Water, an organisation co-founded by Beth Koigi, was developed to support communities living in Arid and Semi-arid to access clean and safe water. Majik Water developed the Atmospheric Water Generator that absorbs moisture from the atmosphere.

We are collaborating with students from Genoa Middle School to raise funds to support us in acquiring these devices for the Mashuru Community.

YOUTH CO-CREATORS

GENOA MIDDLE SCHOOL

We are honoured to have collaborated with students from Genoa Middle School, Ohio.

We were connected to Grade 8 through our friend, Linda Amici, who shared the story of the Mashuru community with them after hearing about it from Kavita. The students' cultural curiosity led them to more deeply understanding the Maa community and their needs. With their teacher, Tina Bardwell, the students co-created a design for a "Future City," and participated in a US-based national competition. The students won second place. They continue to actively pursue funds to support our vision for the people of Mashuru to flourish in all areas of their lives.



LOOKING AHEAD

Globally Reconnect has developed a 7-year plan to contribute towards the attainment of the United Nations Sustainable Development Goals (UNSDGs) by 2030.



BY APRIL 2024

Collect data for all households in the four targeted areas using the Poverty Stoplight adaptation.

Begin a conversation about improving the quality of education in Mashuru.

BY APRIL 2025

Extend the Ustawi survey to cover all households in Mashuru.

Conduct a hydrological survey of Mashuru to assess water availability and quality.



BY APRIL 2026

Collaborate to improve water access in each school in Mashuru

Partner with Hydrating Humanity to improve access to clean and safe water.

BY APRIL 2027

Co-create agricultural curricula for schools with school leaders, teachers, and local farmers.

Partner with the President's Award to support education quality improvements in Mashuru.



BY APRIL 2028

Develop a plan for self-sufficient schools in Mashuru.

BY APRIL 2029

Rely on Ustawi Survey data to continue collaboration with stakeholders to address community-specific challenges.

Scale up successful initiatives to reach more people in the community and surrounding areas.



BY APRIL 2030

Expand the impacts of successful initiatives to neighbouring communities

Sustain Ownership of these initiatives.



LOGIC FRAMEWORK

GOAL:

To co-create sustainable communities where all living systems can flourish.

OBJECTIVES:

- Increase access to water in the community of Mashuru.
- Increase the number of people in the community who are aware of the specific needs and are equipped with the knowledge and skills to better their lives.
- Increase the number of children attending school and advancing to higher levels of education.

FUNDING.

- Have definite fundraising goals.
- Have diverse funding sources.
- Have effective Financial Management.

STRATEGIC PARTNERSHIPS/ WHO WILL HELP US?

- Partner with organisations whose goals are aligned to the UNSDGs.
- Involve the community in all stages of development.
- Partner with organisations whose vision for the world aligns with that of GR.

OUTCOME.

Co-create a community with Empowered Dignity that has Sustained Ownership over the different experiments and projects that we have collaborated to implement in the community.



Co-creating a harmonious world in which all living systems can flourish.